

Notes

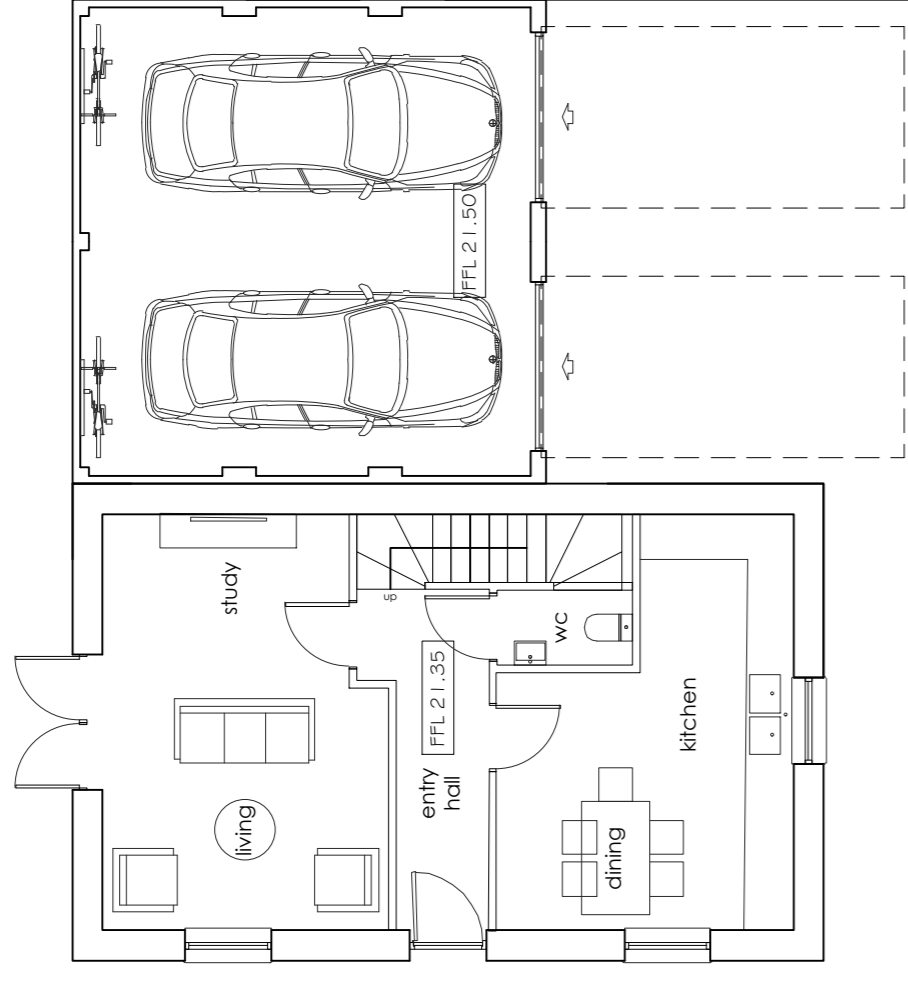
1. This drawing is the copyright of MH Architects Ltd
2. Do not scale this drawing except for Local Authority planning purposes
3. All dimensions to be checked on site by the contractor prior to commencement of the works.

Client Approval

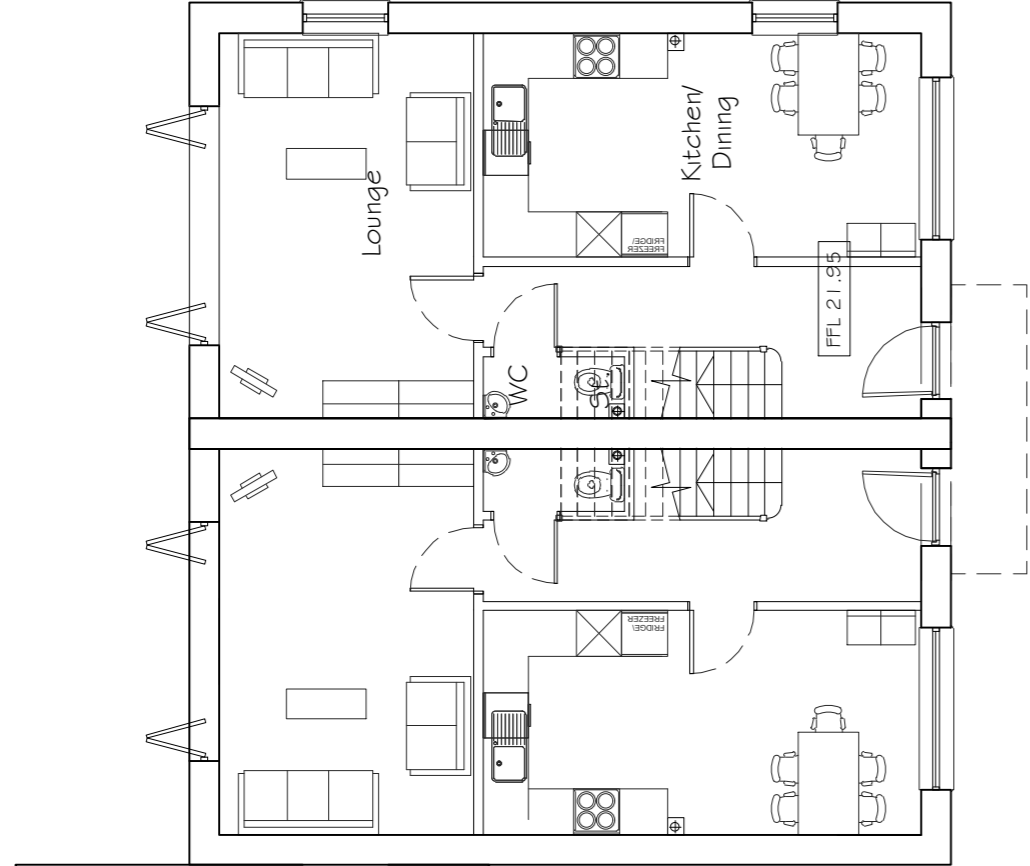
- X A - Approved
- X B - Approved with comments
- X C - Do not use

Rev.	Notes/Purpose of Issue	Drawn By	Date	Checked By	Date

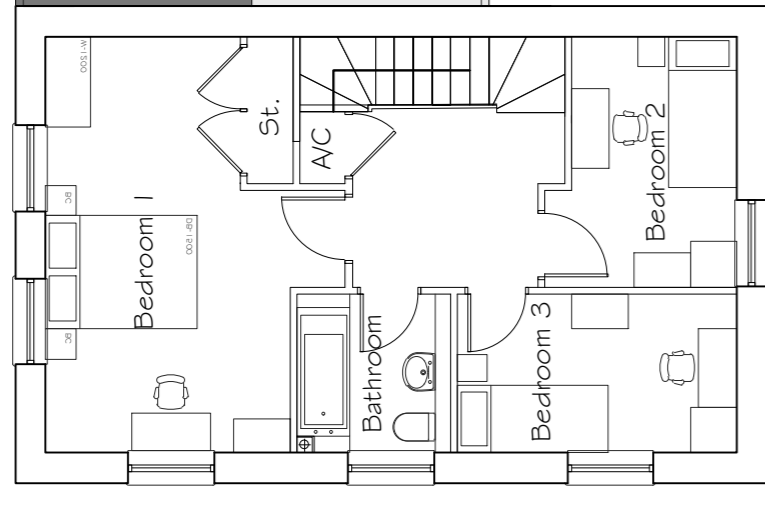
PLOTS 26, 27 & 28 (TYPE C, B & B AFF&SO)
plans & elevations



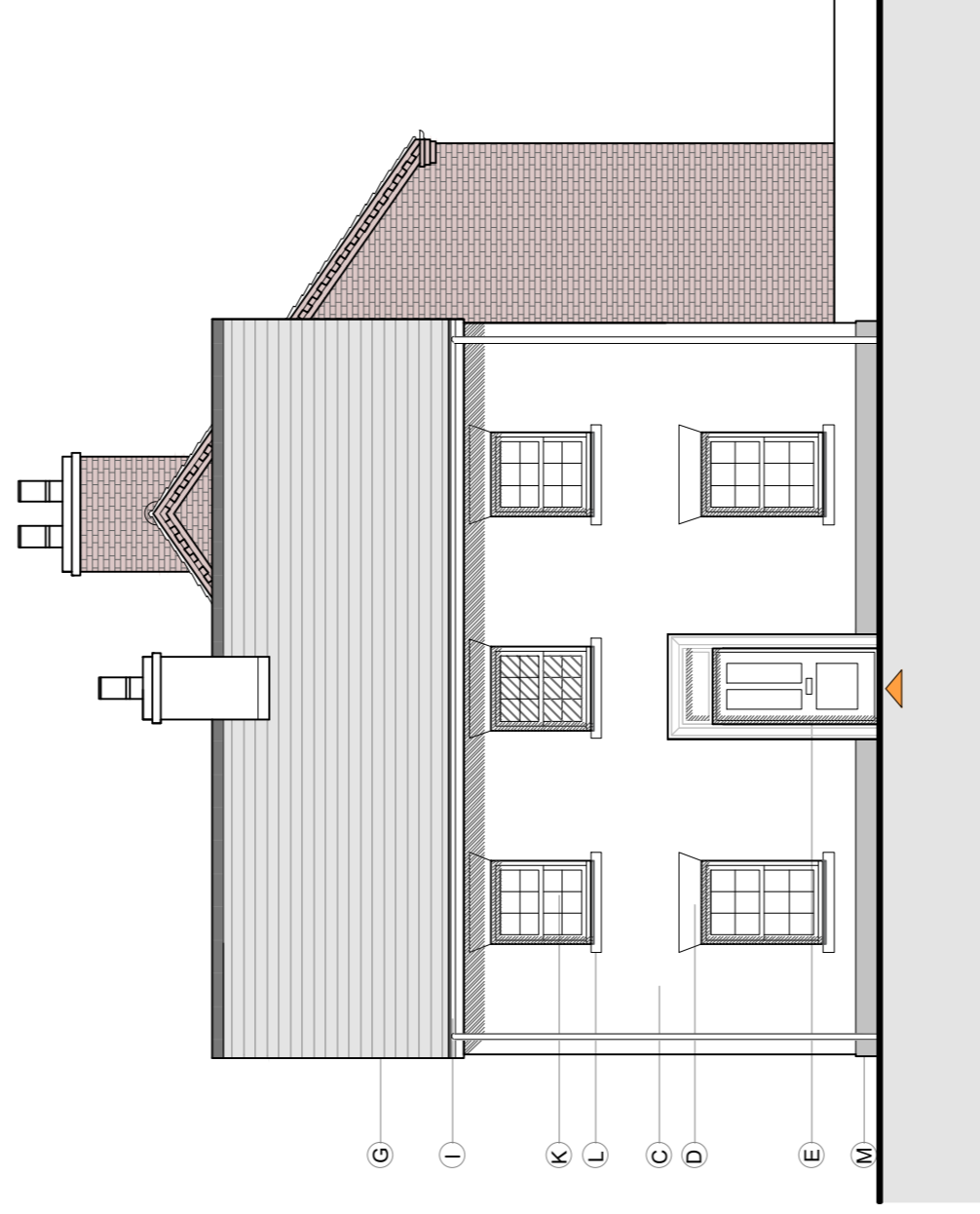
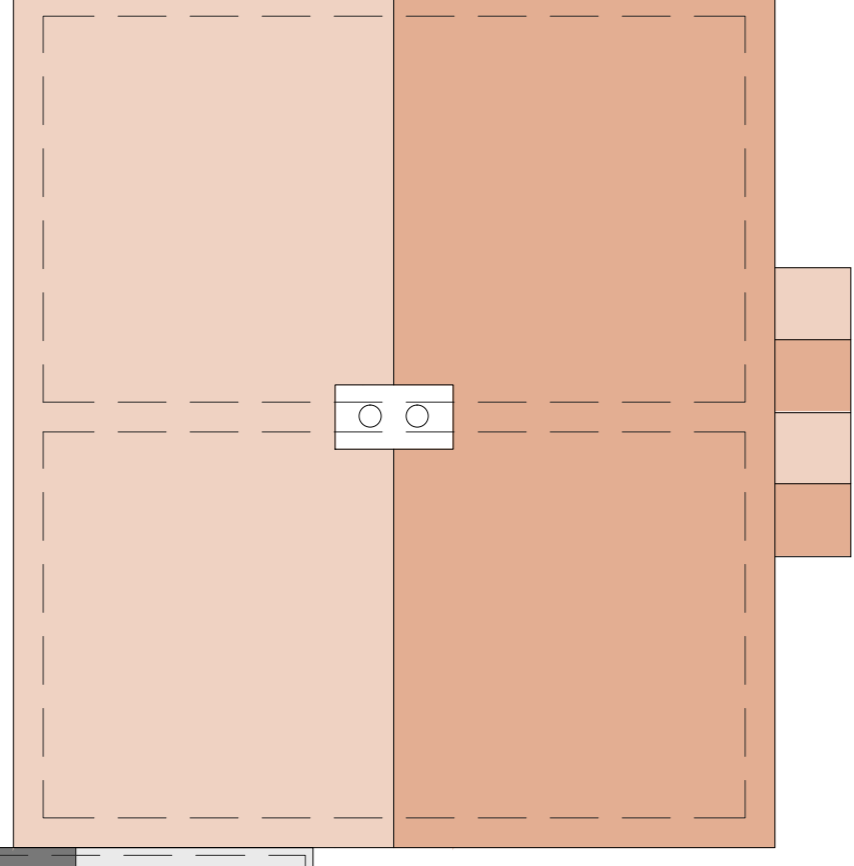
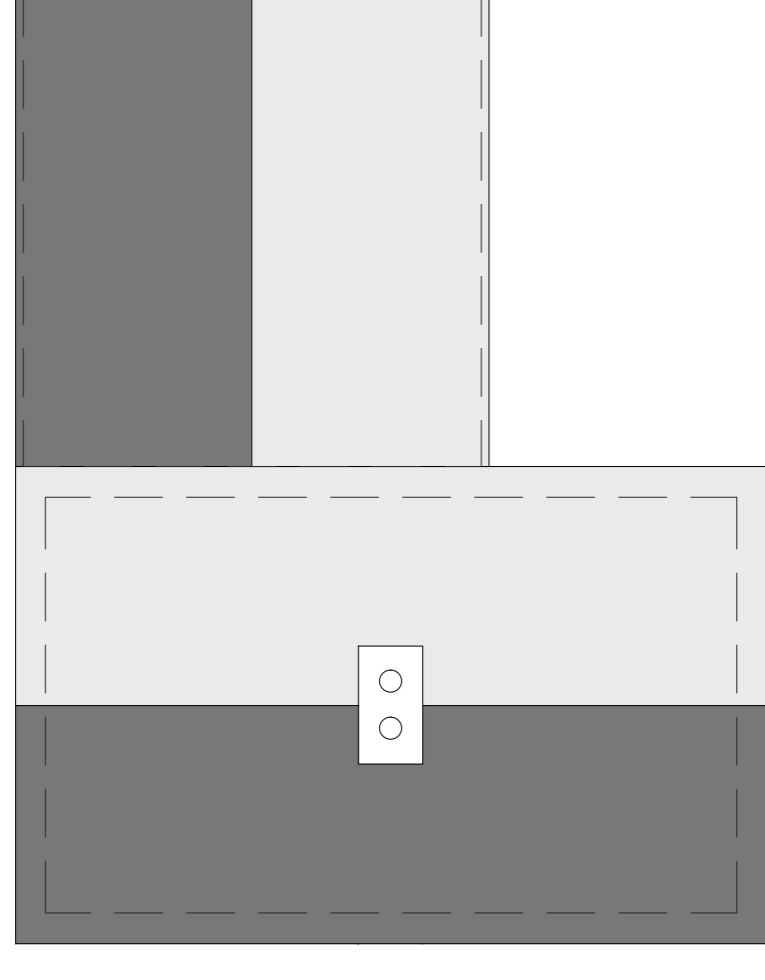
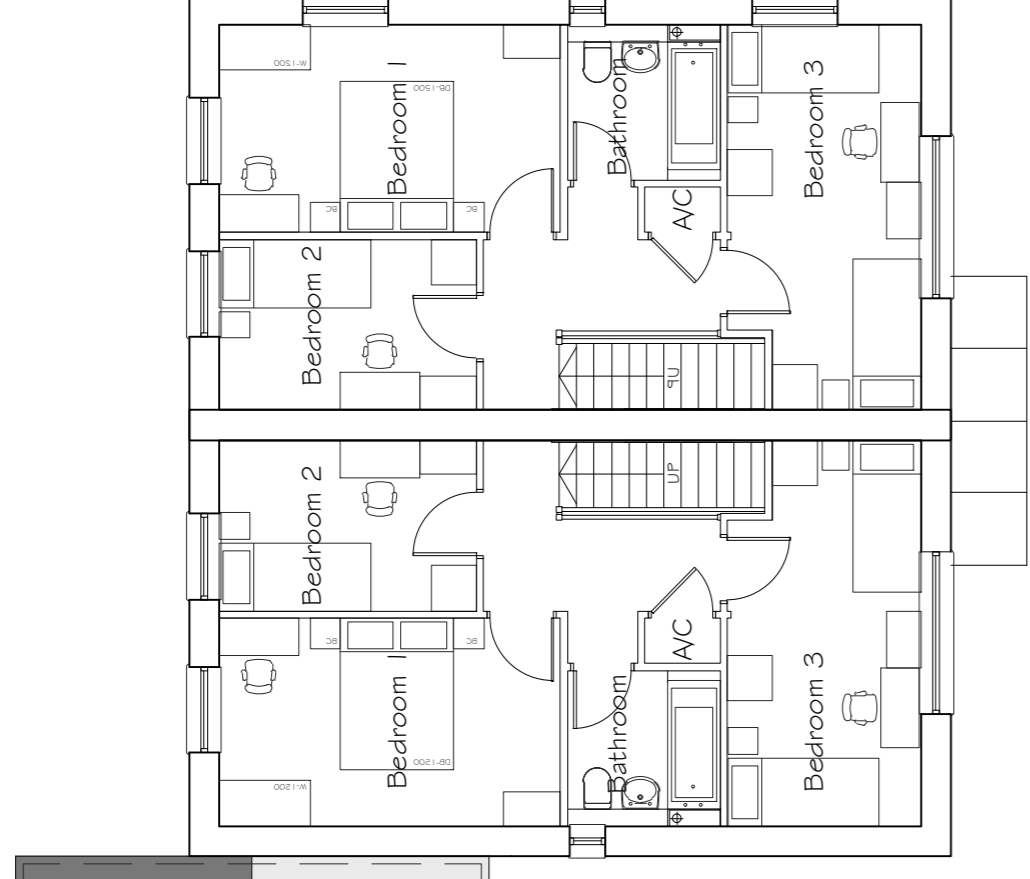
GROUND
floor plan



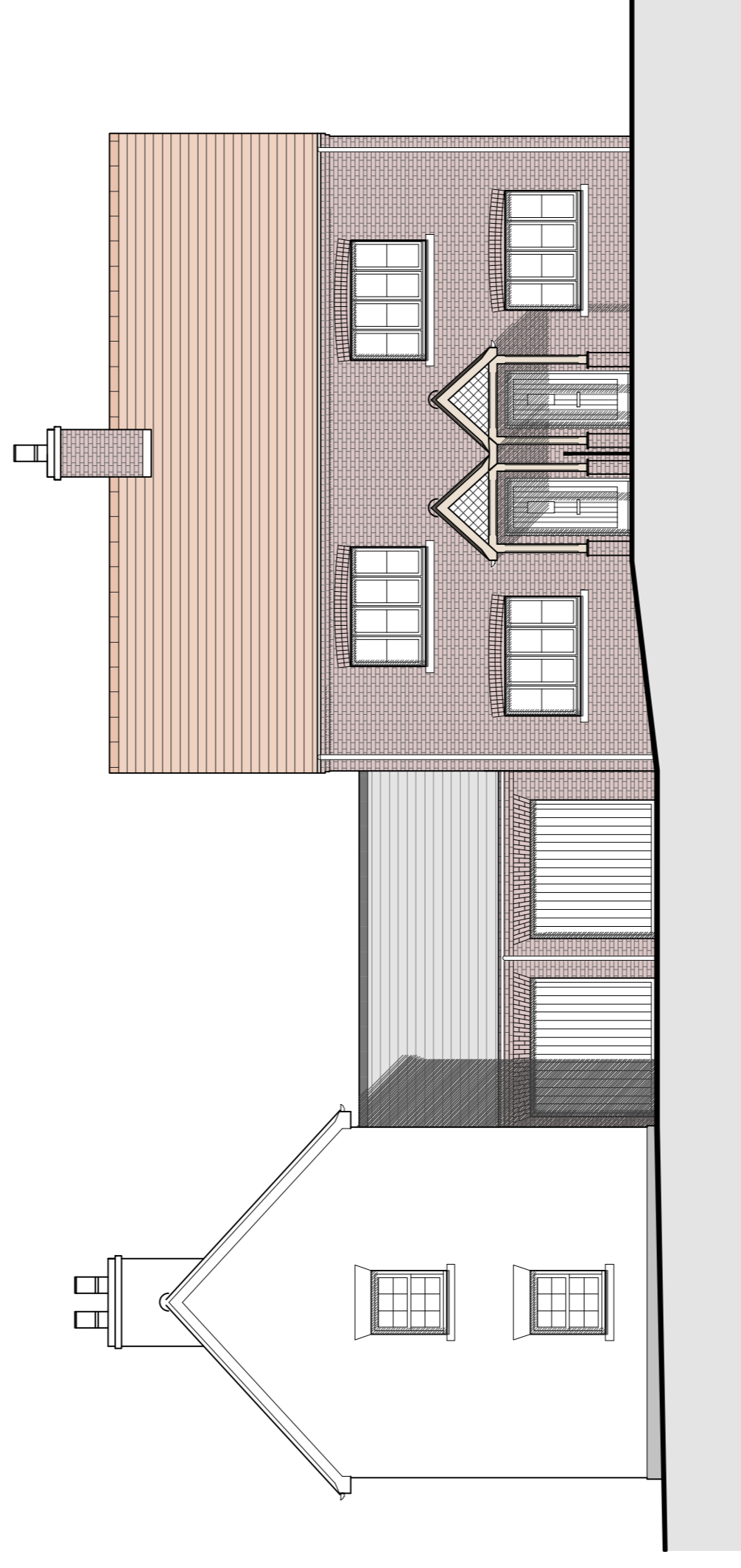
GROUND
floor plan



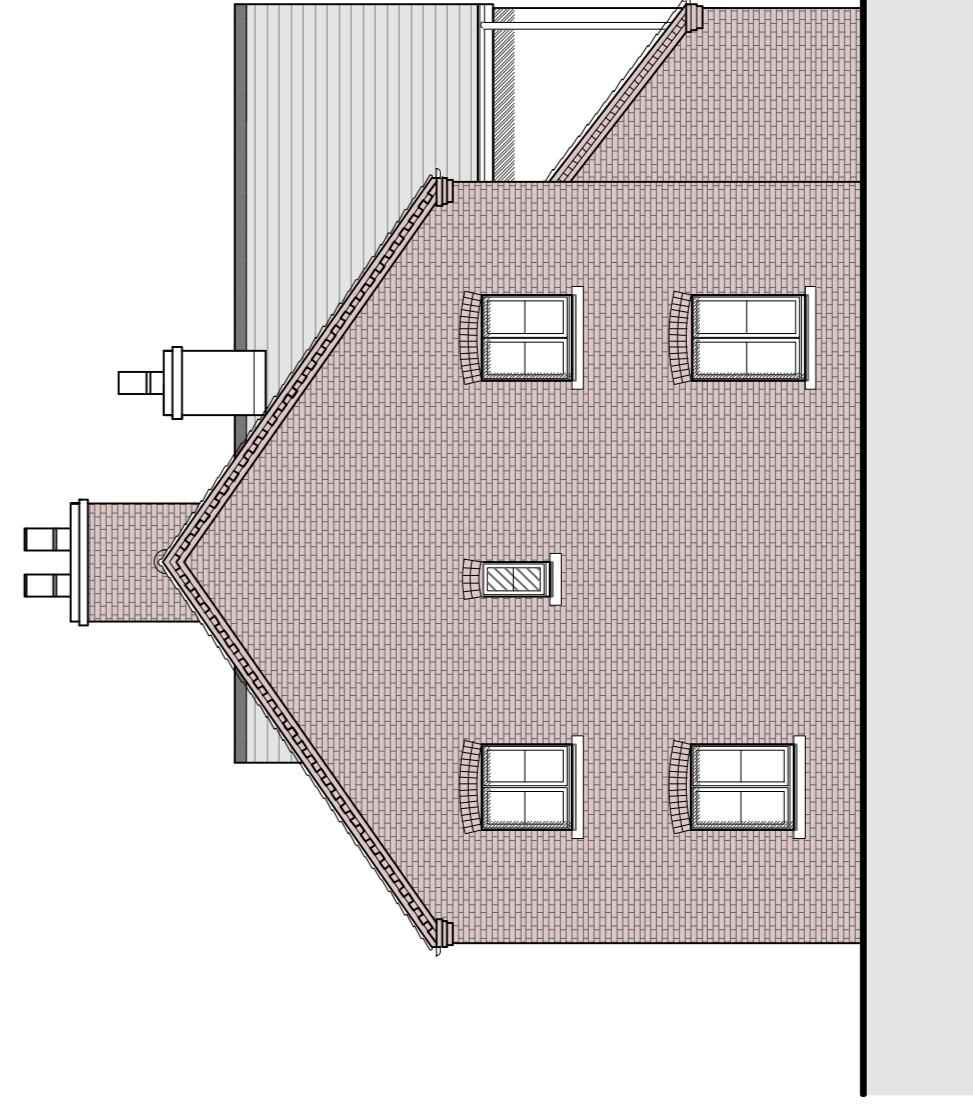
GROUND
floor plan



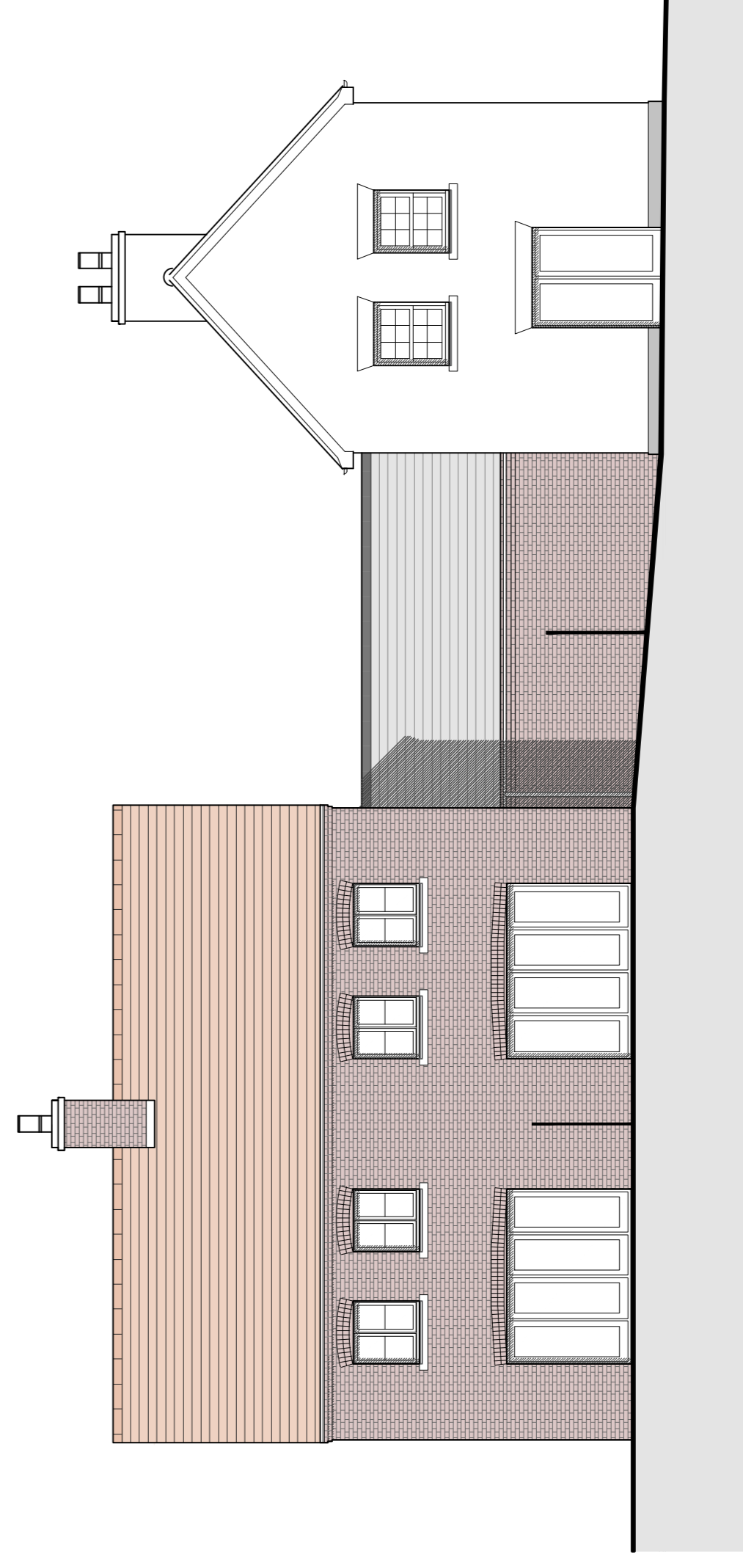
SIDE
elevation



FRONT
elevation



SIDE
elevation



REAR
elevation

Materials Key:

- A. Red multi stock facing brick in Flemish brick bond
- B. Red multi stock flat arch header/ brick detail
- C. Render
- D. Stone header
- E. Stained / Painted timber entrance door
- F. Natural clay roof tiles/ Clay tile hanging
- G. Natural slate roof
- H. Horizontal timber cladding (timber framed car ports)
- I. Polyester powder coated (PPC) metal rainwater good & soffit
- J. Lead clad dormer with PFC trims
- K. UPVC high performance windows (set back 150mm front face) & rooflights
- L. Buff reconstituted stone window cills
- M. Stone plinth

Drawn By	Date	Checked By	Date	Scale at A1

Job No.	Proj.	Disc.	Zone	Level	Type	Rule	No.	Rev.
20-062	OXL	MHA	00	XX	DR	A	017	P05